

# CREATING BETTER FUTURES THROUGH WORKPLACE GIVING



Making small, regular donations to The Smith Family every payday is an easy way to support the education of young Australians in need.

We believe that education is one of the most powerful change agents, and we help children and young people to overcome educational inequality caused by poverty – so they can thrive now and into their futures.



We support the education of around

# 67,000

young Australians  
in need.



In 2023–24, more than

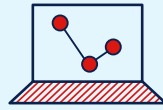
# 178,000

children and young people  
participated in our programs.



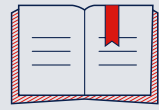
# \$5

can provide a pack of  
coloured pencils to help  
nurture a child's creativity.



# \$10

can provide a child with  
headphones to engage in  
online learning from home.



# \$25

can provide a literacy  
resource pack, so parents  
can help improve their  
child's reading skills.



# \$58

a month will allow you to sponsor  
the education of an individual  
child in need.



# BONUS!

Donations through Workplace Giving  
are taken out of your pay before tax,  
reducing your taxable income.

TO FIND OUT MORE ABOUT OUR AWARD-WINNING PROGRAM, CONTACT YOUR PAYROLL TEAM  
OR EMAIL US AT [WORKPLACEGIVING@THESMITHFAMILY.COM.AU](mailto:WORKPLACEGIVING@THESMITHFAMILY.COM.AU)

# CREATING BETTER FUTURES THROUGH WORKPLACE GIVING



Making small, regular donations to The Smith Family every payday is an easy way to support the education of young Australians in need.

We believe that education is one of the most powerful change agents, and we help children and young people to overcome educational inequality caused by poverty – so they can thrive now and into their futures.



## 3 CO-WORKERS

could each give up one coffee a week and instead support the education of one child in need over a year!



## DOUBLE YOUR IMPACT

Ask your employer if they can match your donations to The Smith Family.



## 9 CO-WORKERS

could each give \$15 a week over a year. More than enough to support the education of 10 children annually.

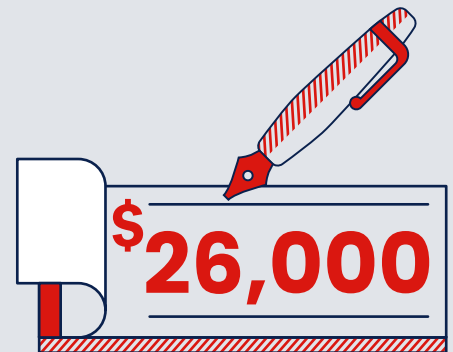
## 25 CO-WORKERS

could each give \$10 a week. That adds up to a yearly gift of \$13,000.

$$25 \times \$10 \times 52 = \$13,000$$

## + MATCHING

And if your employer matches gifts, that's a whopping \$26,000 to support children in need!



More than

# 67,000

students supported on our *Learning for Life* program.



More than

# 178,000

young Australians participating in our programs.



## TOO EASY!

Workplace Giving is managed through your Payroll Team, so they do all the hard work for you.

TO FIND OUT MORE ABOUT OUR AWARD-WINNING PROGRAM, CONTACT YOUR PAYROLL TEAM OR EMAIL US AT [WORKPLACEGIVING@THESMITHFAMILY.COM.AU](mailto:WORKPLACEGIVING@THESMITHFAMILY.COM.AU)