

Annual Impact Report Summary

Financial Year 2024–25



The *Learning for Life* program partners with your family and aims to give your child the things they need to do their best at school.

To measure the success of our *Learning for Life* program, we look at:

1. Attendance

Regular school attendance helps your child do their best at school.

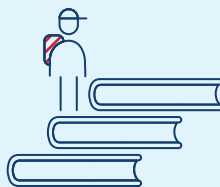


81.7%

was the average attendance for Years 1–10 students in 2024.

2. Advancement

Progressing from Year 10 to Year 12 improves your child's life outcomes.

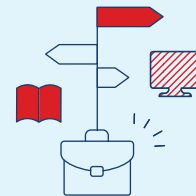


64.9%

of students in Year 10 in 2022 moved to Year 12 by 2024.

3. Engagement

After Year 12, study or work helps your child stay engaged in life and work.



84%

of 2023 Year 12 students were learning or working 18 months later.

Every school day matters.

Miss a day every fortnight and that's a year lost by Year 10! School helps kids learn, make friends, and build bright futures. We understand that's tough sometimes – need support? Your Family Partnership Coordinator is here for you.



We're committed to improving these outcomes together!

Together, we aim to help all **71,818** children and young people on *Learning for Life* attend school regularly, complete Year 12, and go on to further study or work.

To do this, we will:

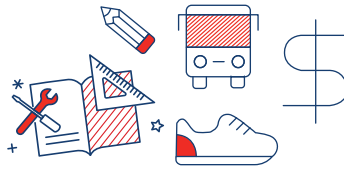
- ✓ Help more students achieve 90%+ school attendance.
- ✓ Increase offers and access to education support at home.
- ✓ Provide you with more information to support your child through their schooling.

Learning for Life provides:



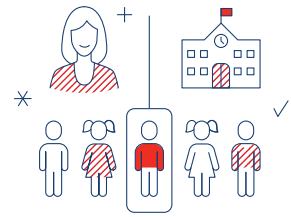
Support from a Family Partnership Coordinator:

They can help you with any school-related challenges and connect you with support services.



Scholarship money:

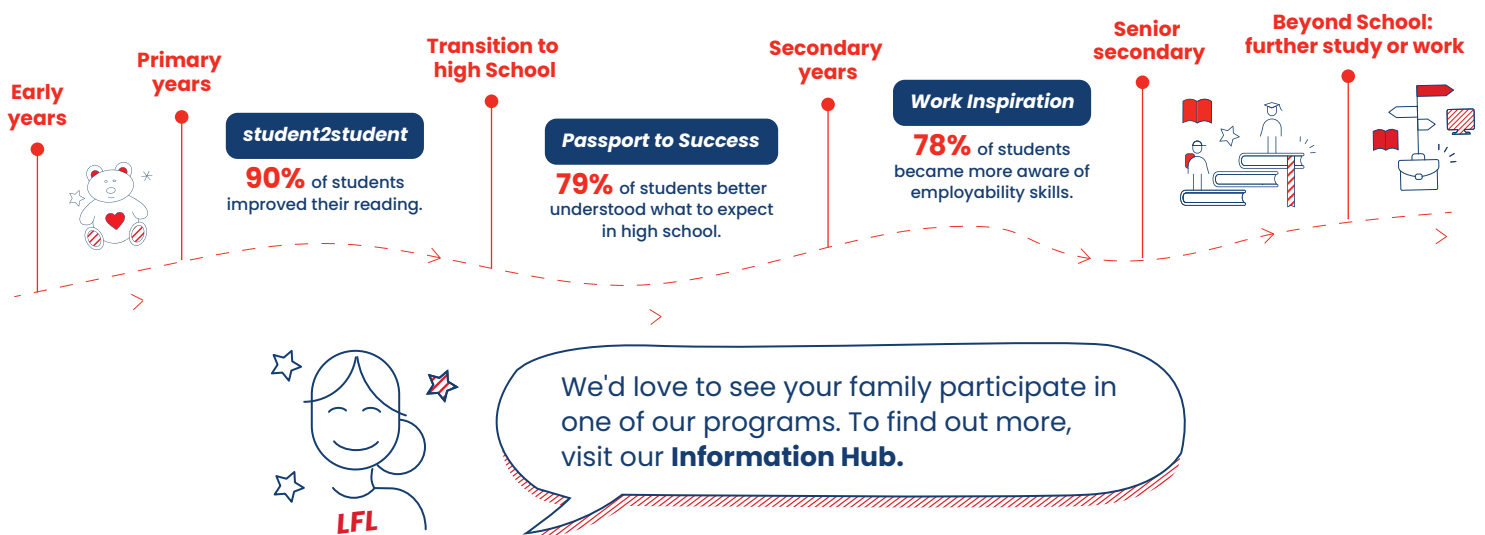
Payments made twice a year to help with the cost of schooling.



Access to education support programs:

Assistance with literacy and numeracy or help from learning mentors.

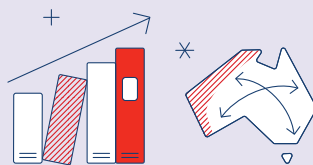
Outcomes of our education support programs



In 2024-25, we supported **226,365** participants.

71,818

children through our *Learning for Life* program, each one important to us.



186,499

children and young people through our education support programs.

You are part of a community committed to helping children, including yours, do well at school.



Visit our website for the full 2024-25 Annual Impact Report.

The Smith Family
Learn today, change tomorrow.